

AFTER SCHOOL TUTORING

Mondays

Rm. G024 - All Subjects
Rm. 2201 - Spanish
Rm. 2030 Earth Science;
Meteor/Geo
Rm. G006 - ELA 11; US;
Meteor/Geo; Cons/Finance

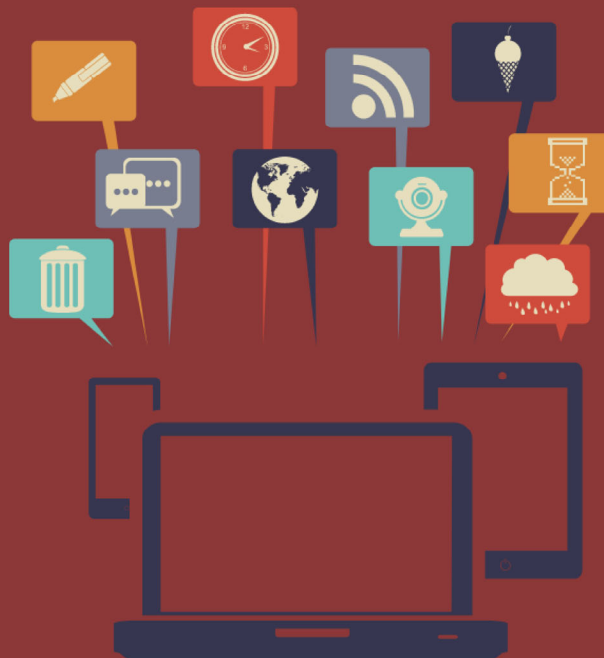
Tuesdays

Rm. 1030 - BIO; History;
Health; ELA
Rm. 2027- Chem; BIO;
Earth Science

Thursday

Rm. G024 - All Subjects
Rm. 2201 - Spanish
Rm. 2030 Earth Science;
Meteor/Geo
Rm. G006 - ELA 11; US;
Meteor/Geo; Cons/Finance
Rm. 1156 - Art
Rm. 2027- Chem; BIO;
Earth Science

**2:55 - 3:40 -
Bus passes
will be
provided**



Friday

Rm. 1030 - BIO;
History; Health; ELA
Rm. 1156 - Art